



HEATER - AIR CONDITIONER
Red Dot Model **R-8545**

BACKWALL

R-8545



Compact and powerful, the R-8545 produces the highest output of any off-road unit its size. Its performance and durability make the R-8545 the ideal choice for off-highway equipment cabs where space is a premium and reliability is essential. Engineered to filter in-cab air as well as incoming outside air when pressurization is required. Models include A/C only or heater and A/C combination.



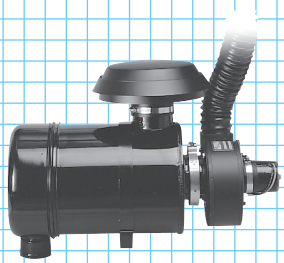
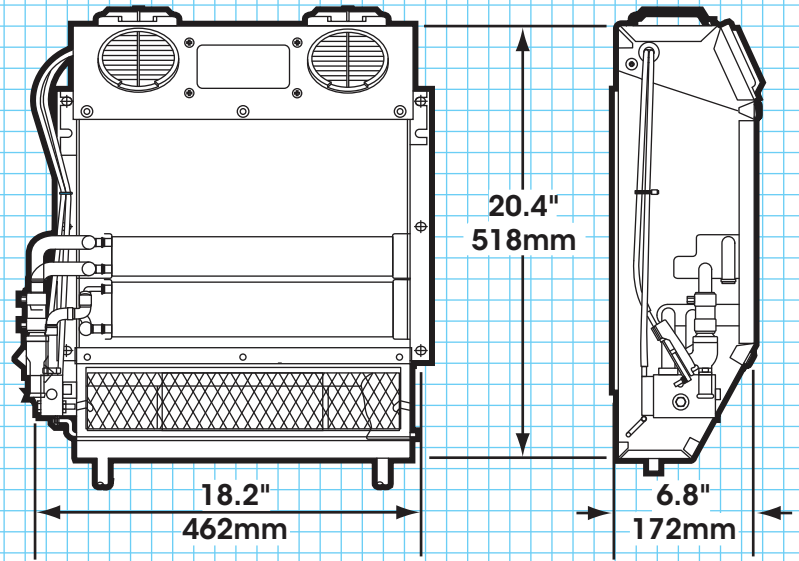
HEATER - AIR CONDITIONER

Red Dot Model **R-8545**

BACKWALL

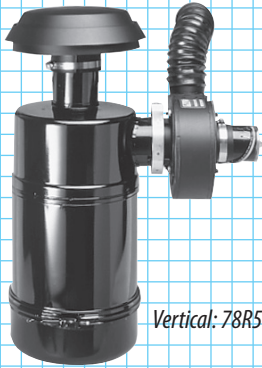
SPECIFICATIONS

- BTUs Heating** – 31,460 BTU/Hr @ 100°F (8.4 kW @ 37.8°C) air temperature rise
- Cooling** – 19,8000 BTU/Hr with 36°F (5.3 kW with 2.2°C) refrigerant temperature and 80°F (26.7°C) wet bulb entering air
- Air Flow** 294 CFM
- Weight Heater & A/C** – 39 lbs. (18 kg)
- A/C Only** – 34 lbs. (15 kg)
- Motor** Totally sealed, 12 or 24 VDC permanent magnet type with long life brushes, and heavy duty pre-lubricated sealed ball bearings
- Draw** 16.1 amps @ 13.6 VDC (includes 4 amps for A/C clutch),
8 amps @ 27.2 VDC (includes 2 amps for A/C clutch)
- Controls** Mode selector switch (heat or A/C), three-speed fan switch, fixed setting A/C thermostat, cable controlled water valve

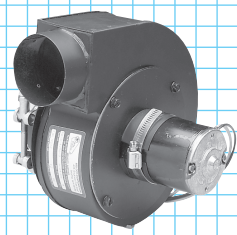


Filter Kits for use with in-line booster pressurizer

Horizontal: 78R5100



Vertical: 78R5110



Inline Booster Pressurizers
73R9202 (12 VDC)
73R9204 (24 VDC)
3" DEFROST HOSE
SOLD SEPARATELY
78R0300

1 square = 1"